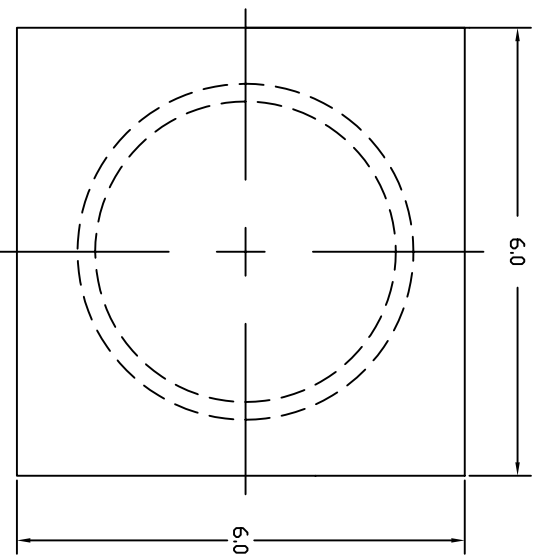
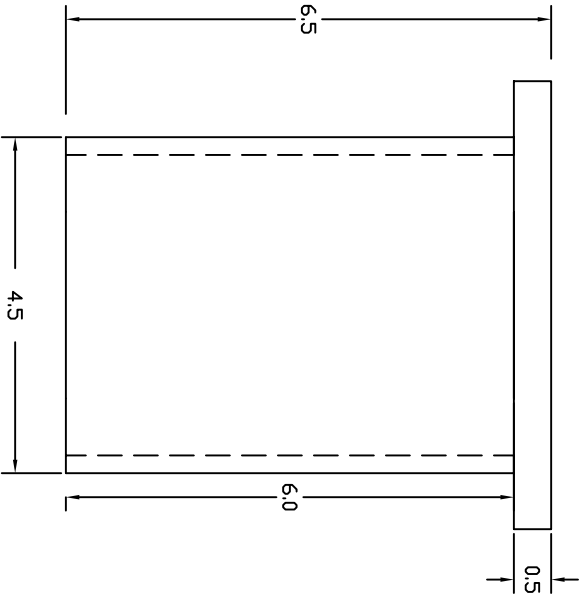


INSTALLATION CONCEPT OF PIER CAP DETAIL



-NOTES-

1. FINISH: MILL STEEL FINISH
2. MATERIAL SPECIFICATIONS:
PIPE: 4.5" O.D. x .237" WALL SCH. 40 PER ASTM A500 GRADE B.
3. PLATE: HOT ROLLED STEEL PER ASTM A36. RATING: 45KIP COMPRESSION WORKING/DESIGN LOAD. THIS RATING IS VALID ONLY IF THE PIER CAP DETAIL HAS BEEN DESIGNED TO ENSURE ADEQUATE LOAD TRANSFER FROM REINFORCED CONCRETE FOUNDATION TO SCREW PIER AND IN ACCORDANCE WITH EXISTING LOCAL CODE REQUIREMENTS AND/OR ESTABLISHED LOCAL PRACTICES.
4. ALL WELDING TO BE DONE BY WELDERS CERTIFIED UNDER SECTION 5 OF THE AWS CODE D1.1.
5. MANUFACTURER TO HAVE IN EFFECT INDUSTRY RECOGNIZED WRITTEN QUALITY CONTROL FOR ALL MATERIALS AND MANUFACTURING PROCESSES.

CATALOG NO. -
C1500607

<p>CONFIDENTIAL: THIS DRAWING AND ITS CONTENTS ARE CONFIDENTIAL AND THE EXCLUSIVE PROPERTY OF HUBBELL POWER SYSTEMS, INC. NO REPRODUCTION, DISTRIBUTION OR COPIES MAY BE MADE WITHOUT THE PRIOR WRITTEN CONSENT OF HUBBELL POWER SYSTEMS, INC. HUBBELL POWER SYSTEMS UNPUBLISHED WORKING DRAWING UNDER THE COPYRIGHT LAWS.</p>	
<p>CHANGE HELLICAL</p>	<p>HUBBELL POWER SYSTEMS</p>
<p>SIZE: A DWG NO.: SA1500607</p>	<p>PILE CAP RS3500.300</p>
<p>GO NOT SCALE THIS DRAWING</p>	<p>DEN BY JCA DATE 08/19/08 SHEET 1/1</p>